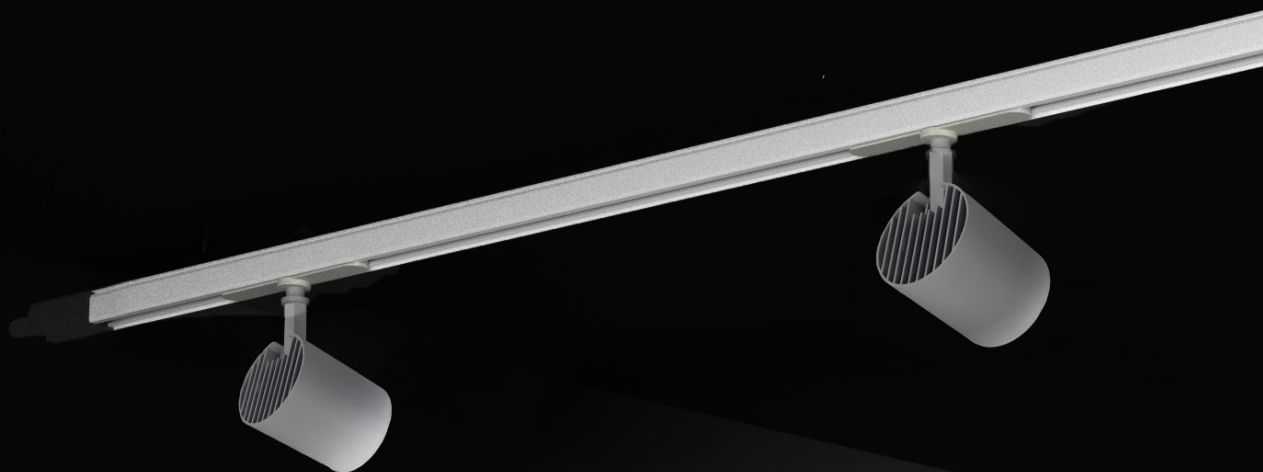


DIVA

Plus



Diva è una serie di proiettori a LED per binario UNITRACK e per installazione a parete. Design essenziale e proporzioni eleganti sono le caratteristiche principali della sua estetica studiata per ottimizzare la gestione passiva del calore. Utilizza ottiche speculari e lenti di ultima generazione.

DIVA is a series of led projectors for UNITRACK and for wall use. Essential design and elegant proportions are the main features of its aesthetics designed to optimize passive heat management. Diva can be equipped with various reflectors or lenses.

Abbinato ai/Match with
Binari/Tracks 230V
pag. 238

Faretti
Spotlights

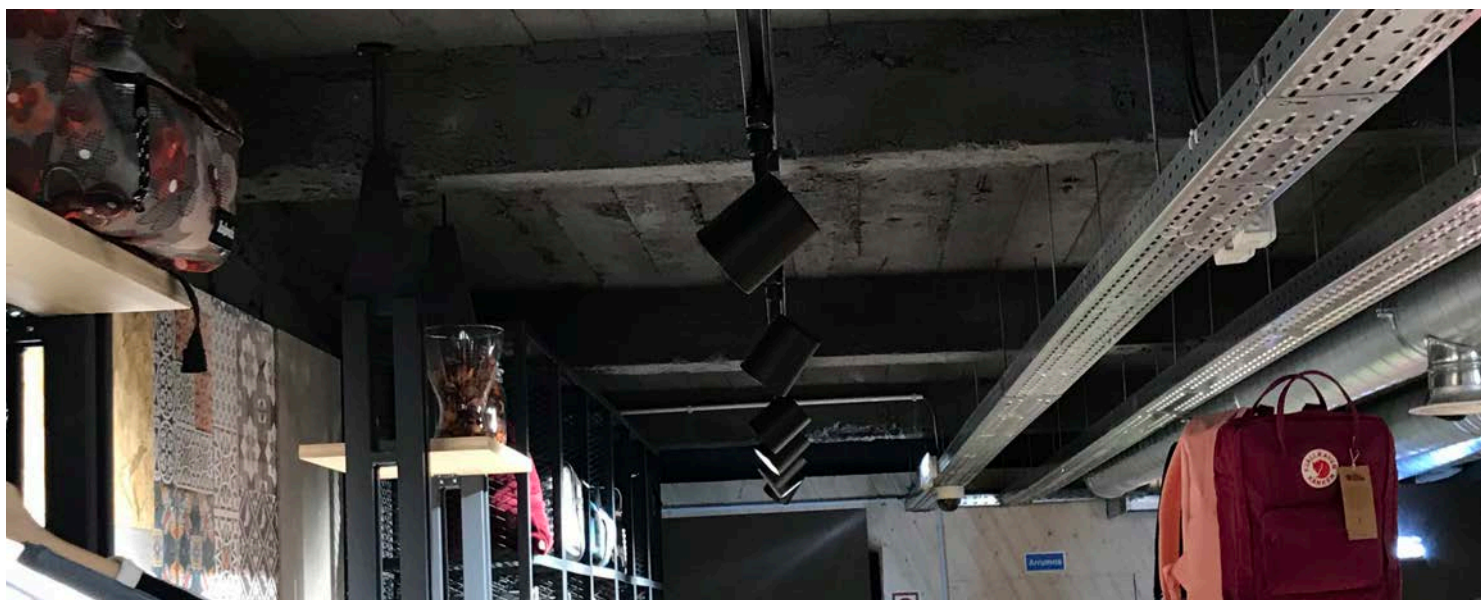


In



Base



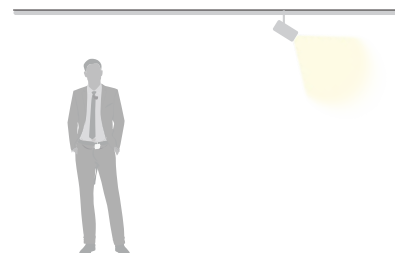




DIVA IN

Corpo ottico, anello e braccio pressofusi in lega di alluminio con verniciatura a polveri. Sorgente luminosa a LED chip on board. CRI90 o superiore. Tono luce bianco 4000K, 3000K o 2700K. Potenze da 25W a 32W. Alimentatore elettronico incluso nell'adattatore da binario trifase.

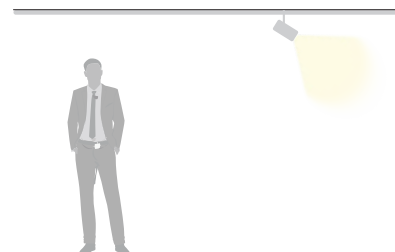
Body, ring and arm in powder coated die-cast aluminum alloy. LED light source chip on board. CRI90 or superior. 4000K, 3000K or 2700K white light tone. Power from 25W up to 32W. Driver included in the three phase track adapter.



DIVA PLUS

Corpo ottico, anello e braccio pressofusi in lega di alluminio con verniciatura a polveri. Sorgente luminosa a LED chip on board. CRI90 o superiore. Tono luce bianco 4000K, 3000K o 2700K. Potenze da 20W a 28W. Alimentatore incluso nell'adattatore a scomparsa nel binario a trifase.

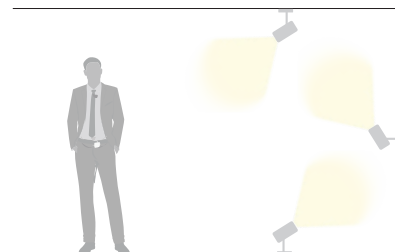
Body, ring and arm in powder coated die-cast aluminum alloy. LED light source chip on board. CRI90 or superior. 4000K, 3000K or 2700K white light tone. Power from 20W up to 28W. Hidden three phase track adapter driver included.



DIVA BASE

Corpo ottico e anello pressofusi in lega di alluminio. Braccio in estruso di alluminio con verniciatura a polveri. Sorgente luminosa a LED chip on board. CRI 90 o superiore. Tono luce bianco 4000K, 3000K o 2700K. Potenze da 32W a 38W. Permette una rotazione di +/- 170° sul piano orizzontale e un'inclinazione di +/- 85° sul piano verticale. Alimentatore elettronico incluso nella base.

Body and ring in die-cast aluminum alloy. Arm in powder coated extruded aluminum. LED light source chip on board. CRI 90 or superior. 4000K, 3000K or 2700K white light tone. Power from 32W up to 38W. It allows +/- 170° horizontal and +/- 85° vertical adjustment. Driver included in the base.



CE	LED
⚡	IP20
RG1	Driver on/off incl.
L80 B10	50000H
CRI 90	360°
90°	



DIVA IN

Z.
COLOR

- bianco raggrinzante/rough white - 32
- nero raggrinzante/rough black - 33
- grigio chiaro opaco/clear matte grey - 37
- custom - 99

D.
OPTIC
12.5°
1

OPTIC
40°
2

OPTIC
58°
3

X.
ART
3
FASHION
4

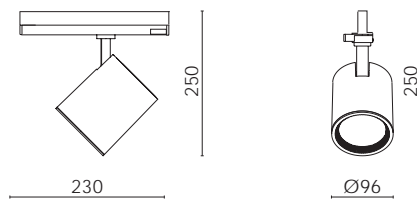
CRI90
6

FOOD
GOLD
MEAT
FISH
7
8
9

Y.
4000K
7

3000K
8

2700K
9



COD. ON/OFF

W

LM

FASCIO/BEAM

DRIVER

MSA.4464. D X Y. Z	25W/230V LED	3450/3290/3242	12.5°/40°/58°	ON/OFF
MSA.4424. D X Y. Z	25W/230V LED	3450/3290/3242	12.5°/40°/58°	DALI
MSA.4454. D X Y. Z	25W/230V LED	3450/3290/3242	12.5°/40°/58°	▲ CASAMBI
MSA.4465. D X Y. Z	32W/230V LED	4400/4200/4140	12.5°/40°/58°	ON/OFF
MSA.4425. D X Y. Z	32W/230V LED	4400/4200/4140	12.5°/40°/58°	DALI
MSA.4455. D X Y. Z	32W/230V LED	4400/4200/4140	12.5°/40°/58°	▲ CASAMBI

ACCESSORI / ACCESSORIES



MDI.FC
Copertura riflettore satinata.
Flood satined lens.



MDI.EL
Diffusore ellittico.
Elliptical lens.



MDI.HC
Diffusore a nido d'ape.
Honeycomb lens.

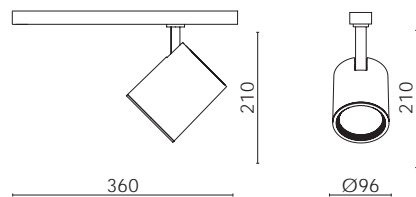


CE	LED
⏚	IP20
RG1	Driver on/off incl.
L80 B10	50000H
CRI 90	360° ⁸ 90° ⁹

- 32 - bianco raggrinzante/rough white
- 33 - nero raggrinzante/rough black
- 37 - grigio chiaro opaco/clear matte grey
- 99 - custom

Z.
COLOR

DIVA PLUS



COD. ON/OFF	W	LM	FASCIO/BEAM	DRIVER
MSA.4474. D X Y. Z	20W/230V LED	3170/3000/2950	12.5°/40°/58°	ON/OFF
MSA.4484. D X Y. Z	20W/230V LED	3170/3000/2950	12.5°/40°/58°	DALI
MSA.4475. D X Y. Z	28W/230V LED	4320/4140/4086	12.5°/40°/58°	ON/OFF
MSA.4485. D X Y. Z	28W/230V LED	4320/4140/4086	12.5°/40°/58°	DALI

D.
OPTIC
12.5°
1

OPTIC
40°
2

OPTIC
58°
3

X.
ART 3
FASHION 4

CRI90
6

FOOD 7
GOLD 8
MEAT 8
FISH 9

Y.
4000K
7

3000K
8

2700K
9

ACCESSORI / ACCESSORIES



MDI.FC
Copertura riflettore satinata.
Flood satinated lens.



MDI.EL
Diffusore ellittico.
Elliptical lens.



MDI.HC
Diffusore a nido d'ape.
Honeycomb lens.






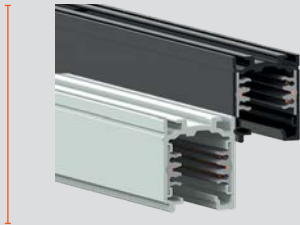
Serie di binari dimmerabili 230V. Disponibile in diverse lunghezze e varianti di colore.
Dimmable 230V tracks. Available in different lengths and colors.

BINARI 230V

TRACKS 230V

Z.
COLOR

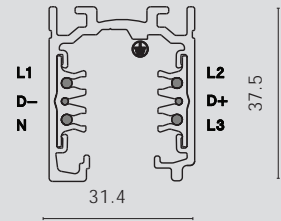
bianco/white - 02 
nero/black - 03 
anodizzato/anodised - 05 



CODICE/CODE

L.MM

MBE.4101.001. Z	1000
MBE.4101.002. Z	2000
MBE.4101.003. Z	3000



ACCESSORI / ACCESSORIES



MBE.4101.210
Alimentazione (destra).
Live end (right).
MBE.4101.211
Alimentazione (sinistra).
Live end (left).



MBE.4101.310
Alimentazione centrale.
Central feed.



MBE.4101.700
Attacco a soffitto.
Ceiling mount.



MBE.4101.605
Sospensioni L. 1500mm (coppia).
Suspension kit L. 1500mm (pair).



MBE.4101.900. Z
Testata di chiusura.
End cap.



MBE.4101.410. Z
Giunto lineare.
Linear joint.



MBE.4101.510. Z
Giunto a due vie (interno).
2 way coupling (inside).
MBE.4101.511. Z
Giunto a due vie (esterno).
2 way coupling (outside).



MBE.4101.610. Z
Giunto a tre vie (interno).
3 way coupling (inside).
MBE.4101.611. Z
Giunto a tre vie (esterno).
3 way coupling (outside).

COMPLETA IL TUO MODULO

COMPLETE YOUR MODULE



CE	LED
⏚	IP20
RG1	Driver on/off incl.
L80 B10	50000H
CRI 90	360°
90°	



DIVA

BASE

Z.
COLOR

- bianco raggrinzante/rough white - 32
- nero raggrinzante/rough black - 33
- grigio chiaro opaco/clear matte grey - 37
- custom - 99

D.
OPTIC
12.5°
1

OPTIC
40°
2

OPTIC
58°
3

X.
ART
3
FASHION
4

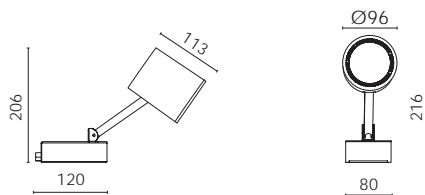
CRI90
6

FOOD
GOLD
MEAT
FISH
7
8
9

Y.
4000K
7

3000K
8

2700K
9



COD. ON/OFF

W

LM

FASCIO/BEAM

DRIVER

COD. ON/OFF	W	LM	FASCIO/BEAM	DRIVER
MDI.4835. D X Y. Z	32W/230V LED	4400/4200/4140	12.5°/40°/58°	ON/OFF
MDI.4825. D X Y. Z	32W/230V LED	4400/4200/4140	12.5°/40°/58°	DALI
MDI.4855. D X Y. Z	32W/230V LED	4400/4200/4140	12.5°/40°/58°	▲ CASAMBI
MDI.4836. D X Y. Z	38W/230V LED	5000/4800/4740	12.5°/40°/58°	ON/OFF
MDI.4826. D X Y. Z	38W/230V LED	5000/4800/4740	12.5°/40°/58°	DALI
MDI.4856. D X Y. Z	38W/230V LED	5000/4800/4740	12.5°/40°/58°	▲ CASAMBI

ACCESSORI / ACCESSORIES



MDI.FC
Copertura riflettore satinata.
Flood satined lens.



MDI.EL
Diffusore ellittico.
Elliptical lens.



MDI.HC
Diffusore a nido d'ape.
Honeycomb lens.

