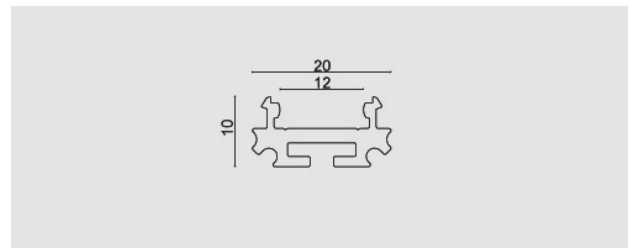




Profilo BASE 1 L=2000 mm, anodizzato

BASE 1 profile L= 2000mm, anodized.

Descrizione/Description



IT: Zero surface, Base 1, Base 3 e Grado sono profili per strip led, disponibili in barre da 2 o 3 mt ideali per l'illuminazione indoor, per i punti difficilmente accessibili e meno illuminati. Completano la gamma i numerosi accessori quali diffusori di varie forme, le relative testate abbinata e le staffe o clip di fissaggio previste. Al loro interno possono alloggiare strip led da 6-10 mm (non in dotazione).

ENG: Zero surface, Base 1, Base 3 and Grado are profiles for LED strips, available in bars of 2 or 3 meters, ideal for indoor lighting, for areas that are difficult to access and less illuminated. The range is completed by numerous accessories such as diffusers of various shapes, the relative combined heads and the brackets or fixing clips provided. Inside they can house 6-10 mm led strips (not supplied).

Codice/Code

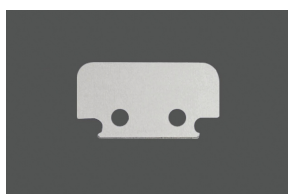
003.024.2000.05

Colore/Color

Anodizzato naturale

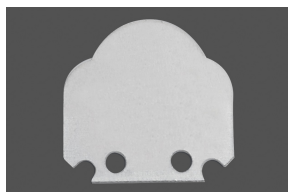


Accessori/Accessories



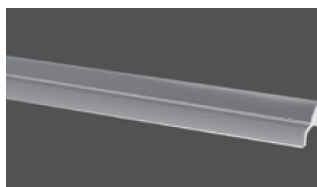
002.024.8013.00
Testata BASE 1 diffusore piatto Senza passacavo

002.024.8013.00
End-cap for BASE 1 flat diffuser, without grommet.



002.024.8021.00
Testata BASE 1 lente fascio stretto senza passacavo

002.024.8021.00
End-cap for BASE 1 narrow beam diffuser, without grommet.



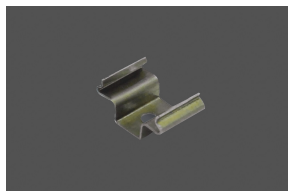
005.024.2003.23
Diffusore base 1 fascio stretto, L=2000 mm, trasparente

005.024.2003.23
Diffuser BASE 1, narrow beam, L= 2000 mm, transparent.



005.031.2001.22
Diffusore BASE 1 L= 2000 mm, opalino

005.031.2001.22
Diffuser BASE 1 opal L:2000mm.



032.024.0001.00
Clip di fissaggio Base 3 - Grado

032.024.0001.00
Fixing brackets for Base1, Base 2, Grado.