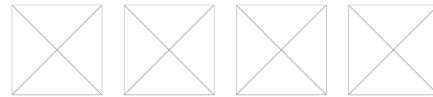


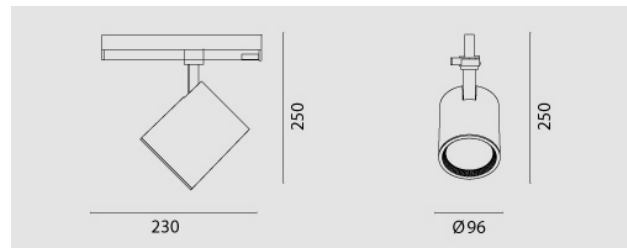


DIVA In 25W, 4000K, fascio 37°, CRI90, nero raggrinzante.

DIVA In 25W, 4000K, 37° beam , CRI90, rough black.



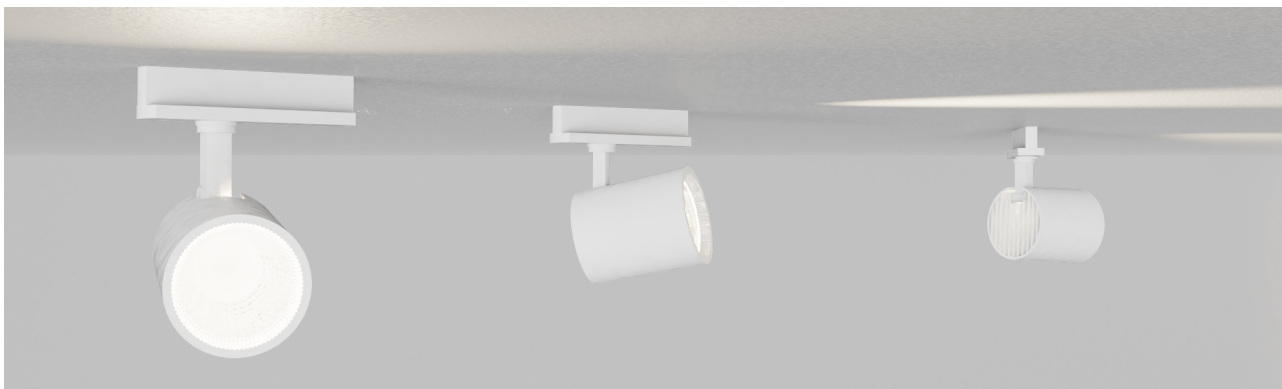
Descrizione/Description



IT: Corpo ottico, anello e bracci pressofusi in lega di alluminio. verniciatura a polveri. Sorgente luminosa a LED chip on board CRI 90 o superiore tono luce bianco 4000K o 3000K, Potenze da 25W a 38W. Alimentatore elettronico incluso nell'adattatore da binario trifase.

ENG: Body ring and arm in powder coated die-cast aluminum alloy. LED light source chip on board CRI 90 or superior, 4000K or 3000K White tone . Power from 20W to 28W. Hidden three phase track adapter driver included.

Codice/Code	MSA.4464.267.33
Tonalità/Light tone	4000K
Potenza/Power	25W
Fusso luminoso/Luminous flux	3001 lm - 3500 lm
Colore/Color	Nero raggrinzante
Fascio luminoso/Light beam	Fascio 37°
Driver/Driver	Driver On/Off



Accessori/Accessories



MDI.EL
DIVA In / Plus, diffusore ellittico.

MDI.EL
DIVA In / Plus, elliptical lens.



MDI.FC
DIVA In / Plus, copertura riflettore satinata.

MDI.FC
DIVA In / Plus, flood satined lens.



MDI.HC
DIVA In / Plus, diffusore a nido d'ape.

MDI.HC
DIVA In / Plus, honeycomb lens.