

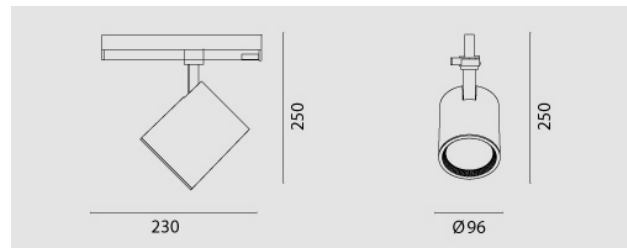


Diva In, 32W, 3000K, fascio 37°, CRI90, bianco raggrinzante.

Diva In, 32W, 3000K, 37° beam, CRI90, rouge white.



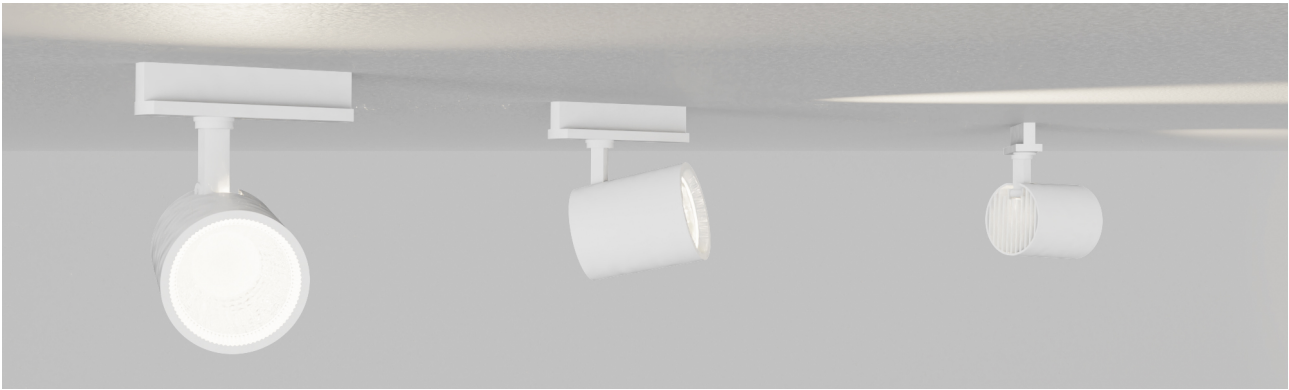
### Descrizione/Description



IT: Corpo ottico, anello e braccio pressofusi in lega di alluminio. verniciatura a polveri. Sorgente luminosa a LED chip on board CRI 90 o superiore tono luce bianco 4000K o 3000K, Potenze da 25W a 38W. Alimentatore elettronico incluso nell'adattatore da binario trifase.

ENG: Body ring and arm in powder coated die-cast aluminum alloy. LED light source chip on board CRI 90 o superior, 4000K or 3000K White tone . Power from 25W to 38W. Driver included in the three phase track adapter.

|                                     |                     |
|-------------------------------------|---------------------|
| <b>Codice/Code</b>                  | MSA.4465.268.32     |
| <b>Tonalità/Light tone</b>          | 3000K               |
| <b>Potenza/Power</b>                | 32W                 |
| <b>Fusso luminoso/Luminous flux</b> | 4001 lm - 4500 lm   |
| <b>Colore/Color</b>                 | Bianco Raggrinzante |
| <b>Fascio luminoso/Light beam</b>   | Fascio 37°          |
| <b>Driver/Driver</b>                | Driver On/Off       |



**Accessori/Accessories**



MDI.EL  
DIVA In / Plus, diffusore ellittico.

MDI.EL  
DIVA In / Plus, elliptical lens.



MDI.FC  
DIVA In / Plus, copertura riflettore satinata.

MDI.FC  
DIVA In / Plus, flood satined lens.



MDI.HC  
DIVA In / Plus, diffusore a nido d'ape.

MDI.HC  
DIVA In / Plus, honeycomb lens.